

# JF30



995 kg (CE)



2180 x 780 x 1750 mm



8 m



6.8 m



## Technical Information



Tel : 0 695 590 680 - Mail : ml34@free.fr

Dimension	L x W x H	2180 x 780 x 1750 mm
Stab. Area		3800 X 3800 mm

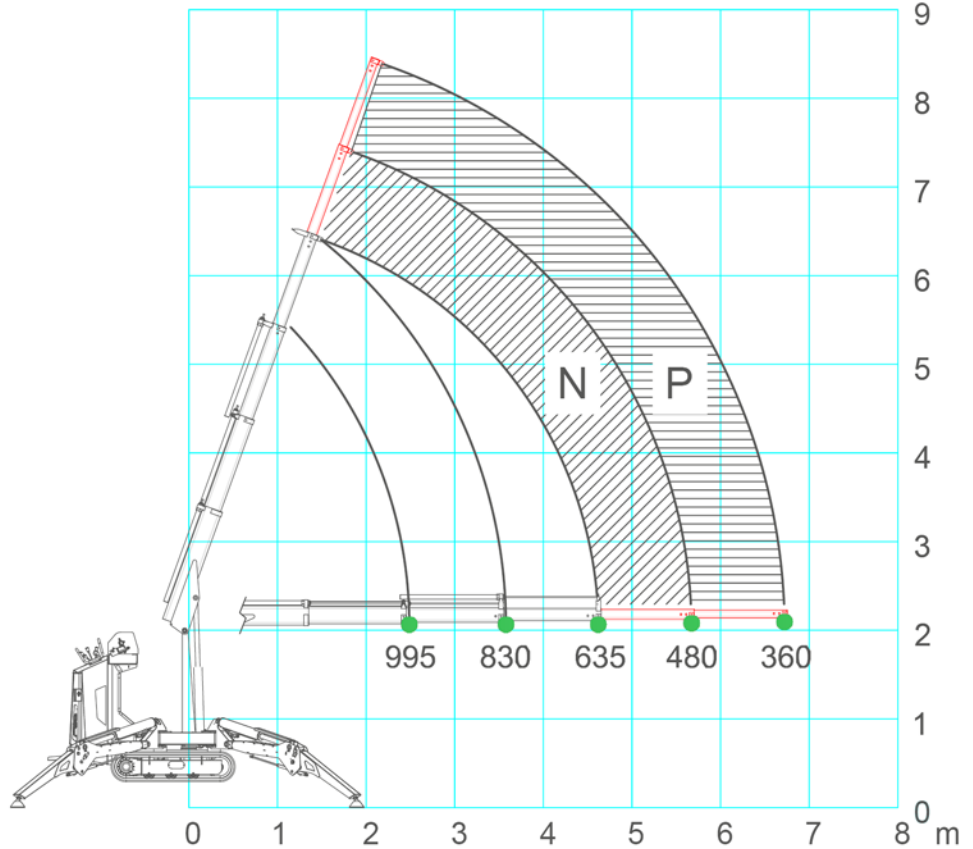
		Kg	
Crane & Options Weights		JF30	1440
		/	
		TF0500	12
		PP400-4DX PP220-4DX PP220-2DX	40
		JIB N	13
		JIB P	10

Winch		500 kg 36 m - Ø 6 mm 27-35 m/min
-------	--	--

JF30	Petrol Engine	YAMAHA MZ 360	7.6 kW 10.4 Hp
------	---------------	------------------	-------------------

Speed		2.6 km/h
-------	--	----------

Gradeability		25°
--------------	--	-----



### Electric Power Pack

	400V 3-AC 4kW / 5.3 HP
	230V AC 2.2kW / 2.9 HP

#### Max. Track Load

	0.32 kg/cm <sup>2</sup>
--	-------------------------

#### Max. Outrigger Load

	1050 kg
--	---------

#### Boom Length

1.5 - 4.7 m	30 sec.
-------------	---------

#### Working Angle

0° / 70°	14 sec.
----------	---------

#### Rotation

325° / 30 sec.
----------------



## Dimensions

